

## The Scott Joplin Collection No. 1

# BETHENA

"Bethena, A Concert Waltz" was the first Joplin work since the death of his wife Freddie from pneumonia on September 10, 1904, ten weeks after their marriage

At the time, the composer was having serious financial problems.

The piece combines two different styles of music, the classic waltz and ragtime.

"Bethena" is regarded as evidence of Joplin's extraordinary talent for composition.

"Bethena, A Concert Waltz" war das erste Joplin-Werk seit dem Tod seiner Frau Freddie am 10. September 1904 an einer Lungenentzündung, zehn Wochen nach ihrer Hochzeit.

Der Komponist hatte damals erhebliche finanzielle Probleme.

Das Stück kombiniert zwei verschiedene Musikstile, den klassischen Walzer und den Ragtime.

„Bethena“ gilt als Beweis für Joplins außerordentliches Kompositionstalent.

Scott Joplin's date of birth is unknown, but is believed to have been born in Texas between June 1867 and January 1868. His parents were freed slaves who left the farm they had worked on shortly after Scott's birth.

Joplin inherited his love of music from his parents.

His teacher Julius Weiss, an emigrant from Germany, was amazed by his musical ability and taught him violin and piano for free. Joplin's Maple Leaf Rag, released in 1899,

was the first musical work to sell over a million copies and established

his reputation as the "King of Ragtime". Scott Joplin died in New York City in 1917.

Scott Joplins Geburtsdatum ist nicht bekannt, man geht aber davon aus, dass er zwischen Juni 1867 und Januar 1868 in Texas geboren wurde.

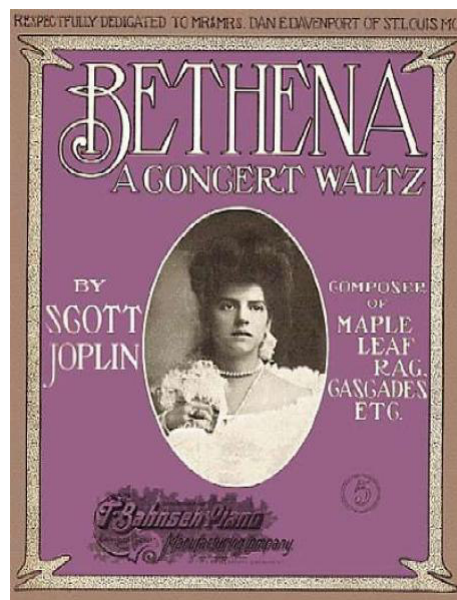
Seine Eltern waren befreite Sklaven, die kurz nach Scott 's Geburt die Farm verließen, auf der sie bis dahin gearbeitet hatten.

Die Liebe zur Musik hatte Joplin von seinen Eltern geerbt.

Sein Lehrer Julius Weiss, ein Emigrant aus Deutschland, war von seinen musikalischen Fähigkeiten begeistert und lehrte ihn kostenlos in den Fächern Violine und Klavier.

Joplins im Jahr 1899 erschienener „Maple Leaf Rag“ war das erste musikalische Werk, welches über eine Million mal verkauft wurde und begründete seinen Ruf als „King of Ragtime“.

Scott Joplin verstarb im Jahr 1917 in New York City.



Cover of the first edition, 1905

The Scott Joplin Collection No. 1

# BETHENA

Scott Joplin

Arrangement:  
Thorsten Reinau

Score

Valse Tempo

1st B♭ Clarinet  
2nd B♭ Clarinet  
B♭ Bass Clarinet

*mp* *rit.*

Valse cantabile

*a tempo*

1st Clar.  
2nd Clar.  
B♭ Bass Clar.

*mp* *f*

Musikverlag  
Reinau

1st Clar.  
2nd Clar.  
B♭ Bass Clar.

*f*

1st Clar.  
2nd Clar.  
B♭ Bass Clar.

41

1. 2.

1st Clar.

2nd Clar.

B♭ Bass Clar.

49

Valse cantabile

1st Clar.

2nd Clar.

B♭ Bass Clar.

*f* *mp*

57

1st Clar.

2nd Clar.

B♭ Bass Clar.

65

1st Clar.

2nd Clar.

B♭ Bass Clar.

*f*

73

rit. Cantabile a tempo

1st Clar.

2nd Clar.

B♭ Bass Clar.

*f*

81 *rall.* *a tempo*

1st Clar. *f*

2nd Clar. *f*

B♭ Bass Clar. *f*

88 1. *rit.* 2. *rit. poco a poco*

1st Clar.

2nd Clar.

B♭ Bass Clar.

97

1st Clar.

2nd Clar.

B♭ Bass Clar.

*p*

105 *rit.* *a tempo*

1st Clar. *f* *p*

2nd Clar. *f* *p*

B♭ Bass Clar. *f* *p*

113 1. 2. *mf*

1st Clar. *mf*

2nd Clar. *mf*

B♭ Bass Clar. *mf*

121

1st Clar. *f* *mf* *f*

2nd Clar. *f* *mf* *f*

B♭ Bass Clar. *f* *mf* *f*

130

1st Clar. *mf* 1. 2. rit. a tempo

2nd Clar.

B♭ Bass Clar.

139 rit. *ff*

1st Clar. *ff*

2nd Clar. *ff*

B♭ Bass Clar. *ff* *mf*

148 rit.

1st Clar.

2nd Clar.

B♭ Bass Clar.

156 Andante Tempo primo

1st Clar. *p* *f*

2nd Clar. *p* *f*

B♭ Bass Clar. *p* *f*